

* **TAILGATING - Are you Guilty?** *

According to the NCDOT, tailgating causes over **5,800** motor vehicle accidents in North Carolina every year¹. North Carolina General Statute Section 20-152: Following too closely, (a) The driver of a motor vehicle shall not follow another vehicle more closely than is reasonable and prudent, having due regard for the speed of such vehicles and the traffic upon the condition of the highway².

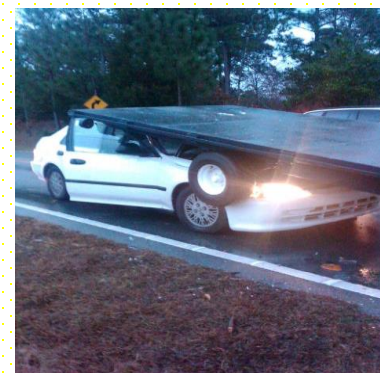
From Oct 2022 to Dec 2023, MCAS Cherry Point recorded **6** motor vehicle accidents involving vehicles that were "following too closely". ASO 5560.7B, Ch. 3, Para 8, Following Distance: the driver of a motor vehicle shall not follow another vehicle more closely than is reasonable and prudent, having due regard for the speed of such vehicles and the traffic upon and the conditions of the street or highway.³

Some of the most common causes of tailgating include:

1. Road rage and reckless or aggressive driving.
2. Drunk driving.
3. Ignorance of safe traveling distance.
4. Driving while drowsy or fatigued or falling asleep at the wheel.
5. Distracted driving.
6. Impatience, often resulting from lateness or traffic congestion.
7. Texting while driving (prohibited on base).



Most rear-end crashes occur when vehicles follow too closely, they do not have enough room to stop. You need at least 2.5 seconds to react and one second for every 10 mph you are traveling⁴. For example, if you are traveling at 35 mph, you would need at least 6 seconds to stop. If you can see the scratches on a vehicle's bumper or a driver can see scratches on a front vehicle's fender, then you are too close!



³ ASO 5560.7B Motor Vehicle Traffic Regulations

¹ Ridley and Brantley Accident Injury Lawyers

² North Carolina General Assembly, GS 20-152

⁴ North Carolina Department of Transportation: Educating Motorist